

# US Speedo

## INSTALLATION INSTRUCTIONS

(810) 244 - 0909 • tech@usspeedo.com • usspeedo.com

### Welcome

This guide will help you to properly install your US Speedo Gauge Face in your 2019 - 2022 Chevrolet Silverado. For more help, follow the QR code to see the installation video for this particular part.



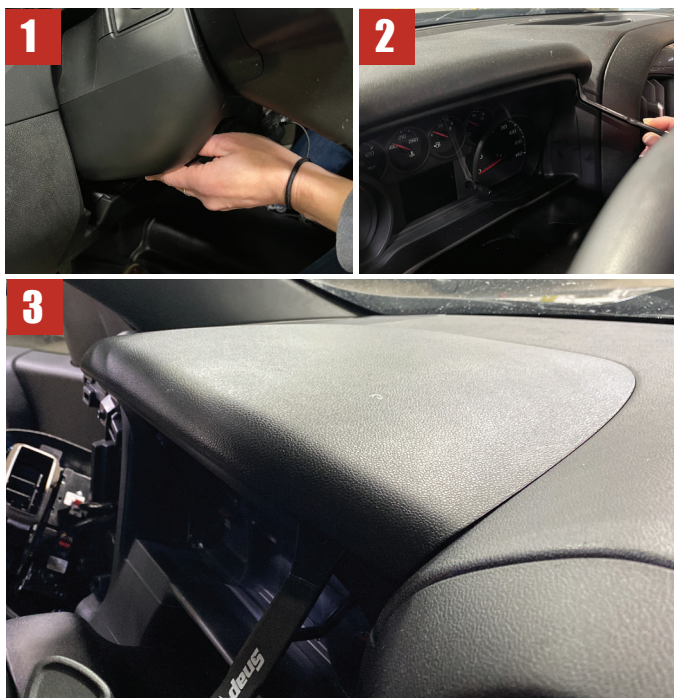
Not seeing the video for removing the cluster from your make, model and year? Please contact our techs at (810) 244 - 0909 or at tech@usspeedo.com for any installation issues.

### Tool List

Let's go over the list of tools required for your US Speedo Gauge

Face Install. You will need:

- A Cordless Drill/Driver
- A T-10 Bit
- A T-15 Bit
- A Flex Adapter is not necessary but helpful
- A Plastic Trim Removal tool
- A 7MM Socket
- A Tack Puller is also helpful in place of your provided Needle Puller Tool but not necessary



### Cluster Removal

#### Step 1 - Move Steering Wheel & Remove Cluster Visor

The first step to removing your cluster is moving your steering wheel out of the way and removing the cluster visor

(Image 1) Tilt the steering wheel down to get it out of your way.  
(Image 2 and 3) Then, using your trim removal tool, gently pry along the edges of the cluster visor to release the clips and remove it.

## Step 2 - Remove Side Panel & Ride Control Trim Bezel

(Image 1) Next, using your trim removal tool, gently pry away the side panel to expose the two T-15 screws holding the ride control trim bezel in place.

(Image 2) Remove the two T-15 Screws and use your trim removal tool (Image 3) to pry the ride control trim bezel/module away.



## Step 3 - Remove Center Bezel & Infotainment Trim Plate

(Image 1) Next, using your trim removal tool, gently pry away the center bezel. Work gradually around the bezel to remove it safely.

(Image 2) Once the center bezel has been removed, Remove the four T-15 Screws holding the Infotainment trim plate in place

(Image 3) Gently pry the Infotainment trim plate loose at the top

(Image 4) Once loose, pry the trim pad away from the dash near the cluster. This will allow you room to remove the cluster panel

## Step 4 - Remove Cluster Panel

The cluster panel is a single piece of trim surrounding your cluster and trimming the top of the steering wheel. It must be removed to access the cluster.

(Image 1) Start by removing the three 7mm screws located along the top of the cluster panel

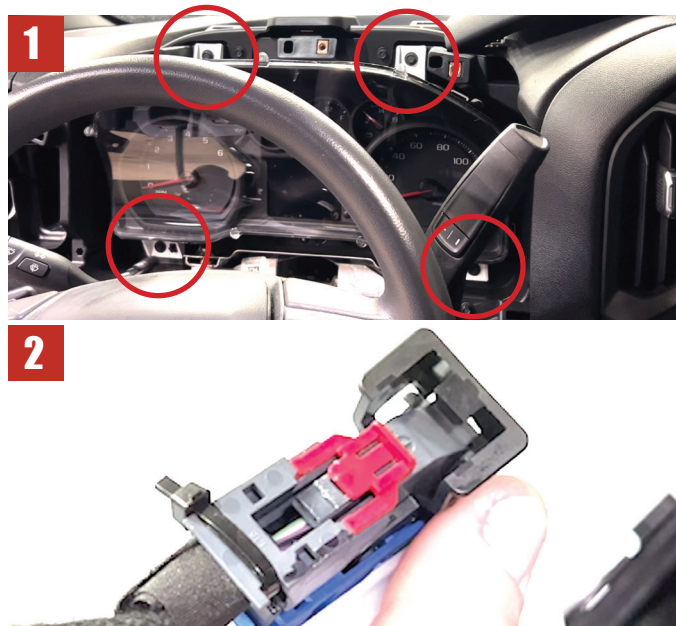
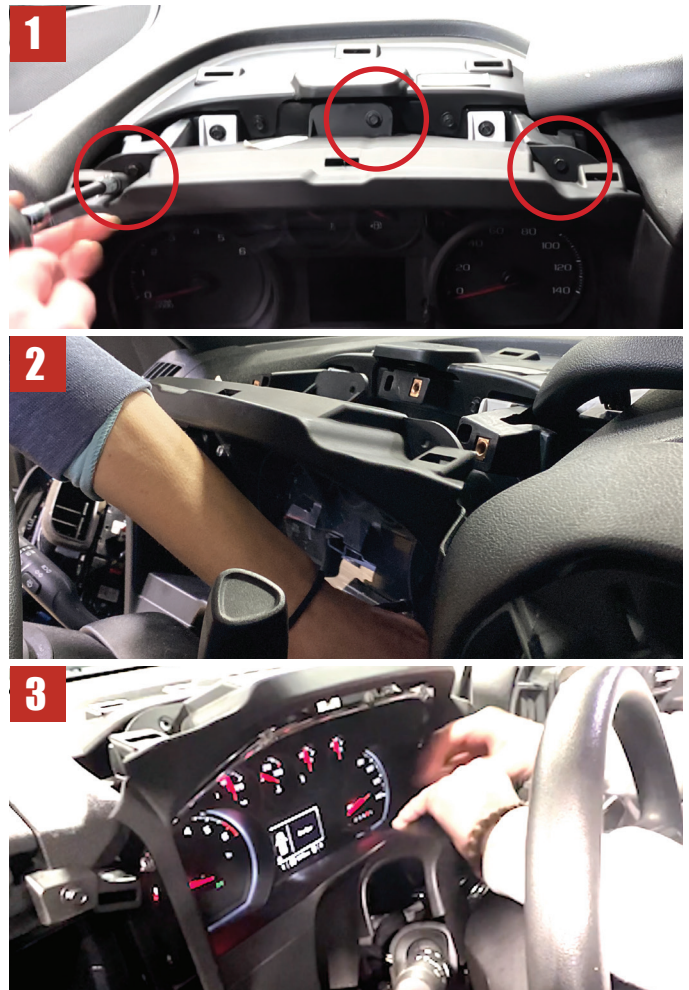
(Image 2) Next gently pull the lower left hand side of the panel away from the clip and work your way around the panel, loosening it from the retaining clips.

It is sometimes helpful to shift the vehicle into drive for the removal of the cluster panel. Be very careful during this step. Be sure to apply your parking brake when doing this.

(Image 3) Grab the center of the panel and lift up slightly to remove it from the back of the steering wheel then lift/pull slightly on the area of the cluster panel near the directional signal.

The cluster panel should lift free

*Remember to shift your vehicle back into park, turn off the ignition and remove your parking brake*



## Step 4 - Remove instrument Cluster

(Image 1) The instrument cluster is held in place by four 7mm screws.

Remove the four 7mm screws to free the cluster

(Image 2) Unplug the cluster by sliding the red retainer out of the way and depressing the clip to allow black lever to lift. This releases the cluster plug.

## Gauge Face Install for Silverado Custom / Custom Trail Boss

We will now install your gauge face in your Chevy Silverado Custom

(Image 1) First, working your way around the cluster, push in tabs and pull up on clips while applying constant pressure to separate the lens from the cluster



(Image 2) Next, make sure the needles for your speedometer and tach are resting at their start positions. Mark those positions with a Sharpie on your OEM gauge face.



(Image 3) Use a tack puller, preferably, or your included needle removal tool to remove the needles from your speedometer and tach.

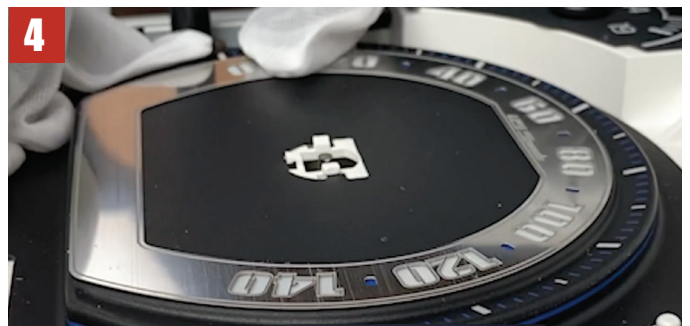
Hold the needle hub securely. Gently slide the ends of the tool between the gauge face needle hub. Use a rocking motion with the tool to gradually loosen it. Do not turn the needle or apply excessive force



Remove the OEM gauge faces and set aside

It is now time to install your US Speedo Gauge Face. Start by putting on the supplied cotton gloves. This will protect the stainless surface from fingerprints.

(Image 4) Slide the tabs in the center of the gauge face under the retainers on the cluster. Make sure the gauge face is properly seated and aligned with the cluster's positioning pegs

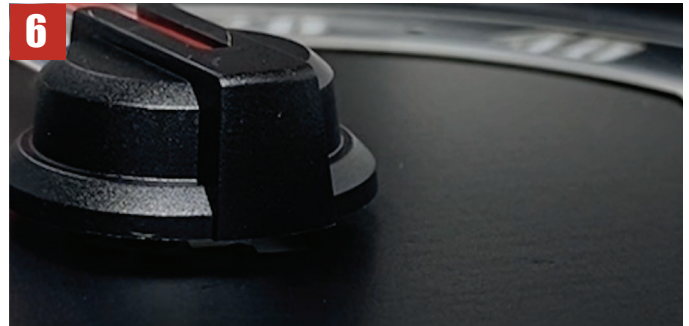


## Gauge Face Install for Silverado Custom / Custom Trail Boss - cont.

Next, we will reinstall the needles. (Image 5) Refer to the marks you made on the OEM gauge face. Position the needle in the same position and push the hub down onto the needle stem. Push straight down, do not twist the needle.



(Image 6) Be careful to leave room between the needle hub and the gauge face. Check to make sure the needle is in the same relative position as previously marked.



Remove any debris from your gauge face surface.

(Image 7) Reinstall your lens. Your cluster is now ready to be reinstalled in your vehicle.



## Gauge Face Install for Silverado RST

We will now install your gauge face in your Chevy Silverado RST

(Image 1) First, working your way around the cluster, push in tabs and pull up on clips while applying constant pressure to separate the lens from the cluster.



(Image 2) Next, make sure the needles for your speedometer and tach are resting at their start positions. Mark those positions with a Sharpie on your OEM gauge face.



(Image 3) Use a tack puller, preferably, or your included needle removal tool to remove the needles from your speedometer and tach.

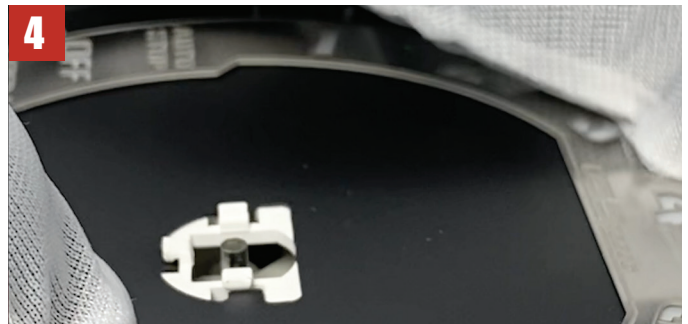
Hold the needle hub securely. Gently slide the ends of the tool between the gauge face needle hub. Use a rocking motion with the tool to gradually loosen it. Do not turn the needle or apply excessive force



Remove the OEM gauge faces and set aside

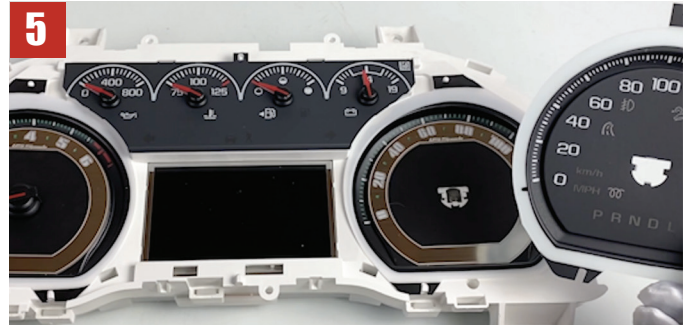
It is now time to install your US Speedo Gauge Face. Start by putting on the supplied cotton gloves. This will protect the stainless surface from fingerprints.

(Image 4) Slide the tabs in the center of the gauge face under the retainers on the cluster. Make sure the gauge face is properly seated and aligned with the cluster's positioning pegs

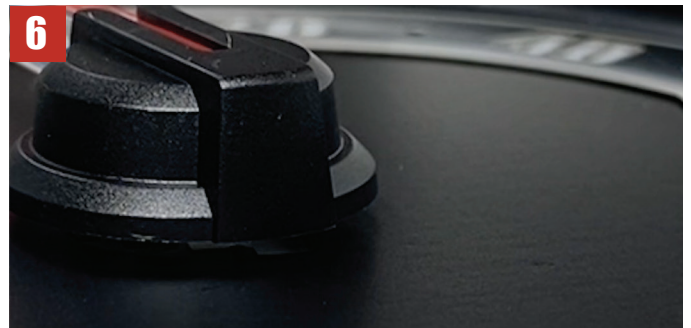


## Gauge Face Install for Silverado RST - cont.

Next, we will reinstall the needles. (Image 5) Refer to the marks you made on the OEM gauge face. Position the needle in the same position and push the hub down onto the needle stem. Push straight down, do not twist the needle.



(Image 6) Be careful to leave room between the needle hub and the gauge face. Check to make sure the needle is in the same relative position as previously marked.



Remove any debris from your gauge face surface

(Image 7) Reinstall your lens. Your cluster is now ready to be reinstalled in your vehicle.



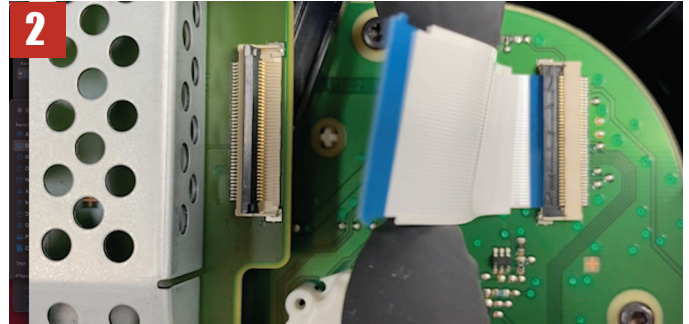
## Gauge Face Install for Silverado LTZ - LT - LT Trail Boss

We will now install your gauge face in your Chevy Silverado LTZ or LT

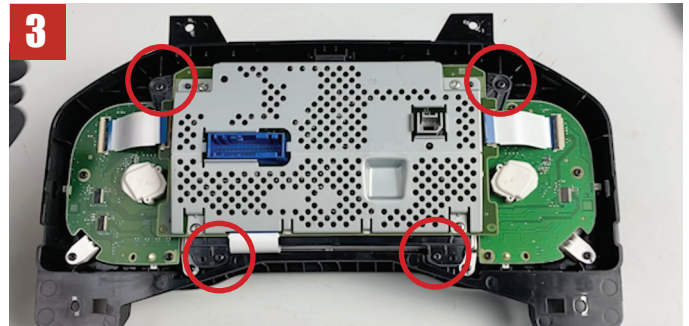
(Image 1) First, turn the cluster over. Working your way around the cluster, push in tabs and pry up gently to remove the back of the cluster



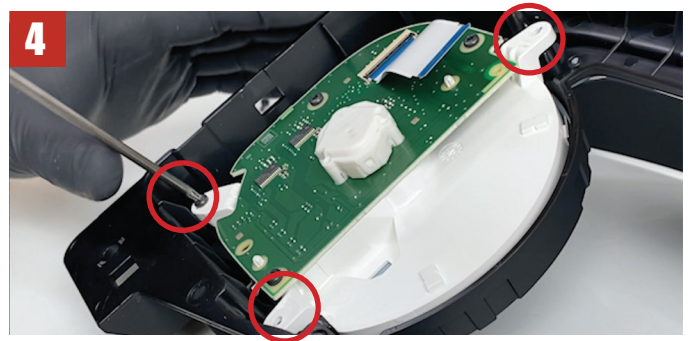
(Image 2) Next, lift up on the retaining clamps and carefully release the ribbon cables from center screen module



(Image 3) Remove the four T-10 screws attaching the center screen to the lens. Then, remove the center screen from the lens and carefully set it aside.



(Image 4) The speedometer and tach pods are attached to the lens by three T-10 screws each. Remove the screws and gently lift the pods out of the lens. Carefully set the lens aside.



(Image 5) Remove the chrome trim rings from the speedometer and tach pods by working your way around the ring, gently pulling up the tabs





## Gauge Face Install for Silverado LTZ - LT - LT Trail Boss - cont.

(Image 6) Next, make sure the needles for your speedometer and tach are resting at their start positions. Mark those positions with a Sharpie on your OEM gauge face.

(Image 7) Use a tack puller, preferably, or your included needle removal tool to remove the needles from your speedometer and tach.

Hold the needle hub securely. Gently slide the ends of the tool between the gauge face and needle hub. Use a rocking motion with the tool to gradually loosen it. Do not turn the needle or apply excessive force

Remove the OEM gauge faces and set aside

It is now time to install your US Speedo Gauge Face. Start by putting on the supplied cotton gloves. This will protect the stainless surface from fingerprints.

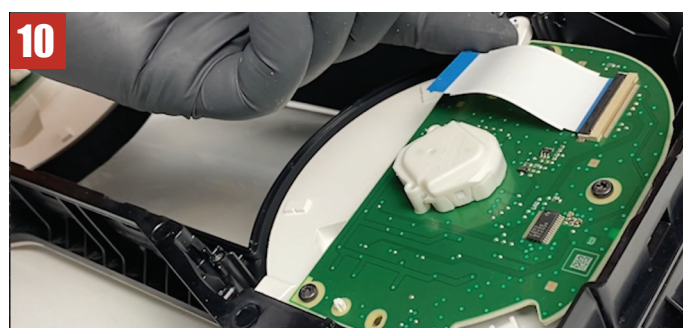
(Image 8) Position gauge face using center positioning tab at the bottom of the needle hole. Once in place, apply pressure to the gauge face on either side of the needle hole. The gauge face should pop below the retaining tabs on the center needle post

(Image 9) Next, we will reinstall the needles. Refer to the marks you made on the OEM gauge face. Position the needle in the same position and push the hub down onto the needle stem. Push straight down, do not twist the needle. Be careful to leave room between the needle hub and the gauge face. Check to make sure the needle is in the same relative position as previously marked.

Reinstall the chrome trim rings to each pod

Remove any debris from your gauge face surface

(Image 10) Reinstall the speedometer and tach pods into your lens using three T-10 screws per pod.

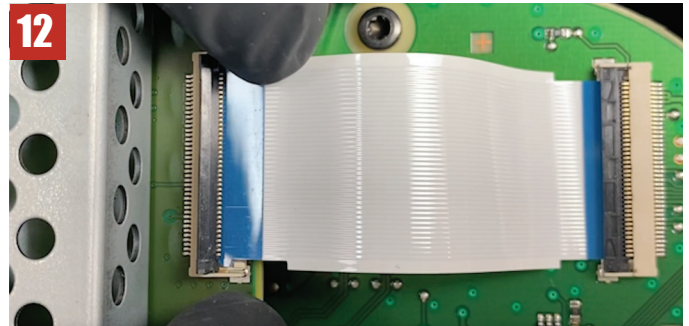


## Gauge Face Install for Silverado LTZ - LT - LT Trail Boss - cont.

(Image 11) Reinstall the center screen into the lens. Be sure the ribbon cables are not tucked under the screen then fasten the center screen into place using four T-10 screws



(Image 12) Carefully re-seat the ribbon cables and re-engage the retaining clamps. Make sure the ribbon cable is properly seated with the positioning tabs in place before closing the clamp.



(Image 13) Reinstall the back cover of the cluster.



(Image 14) Your cluster is now ready to be reinstalled in your vehicle.





6050 Birch Dr. Flint, MI 48507

**(810) 244 - 0909**

[tech@usspeedo.com](mailto:tech@usspeedo.com)

[usspeedo.com](http://usspeedo.com)