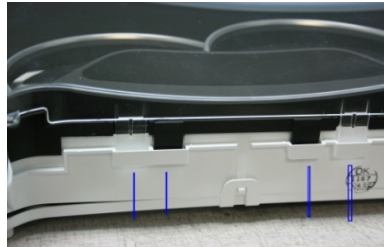




C6 CORVETTE



1. Press in the tabs from the bottom side to release the lens.



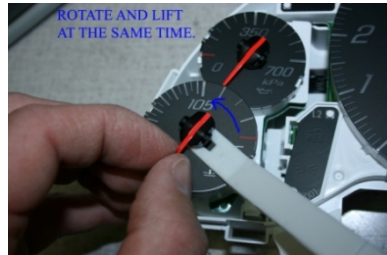
2. It is a little difficult, but start on one side and work your way around.



3. If you havent made the diagram for needle placement, make it now.



4. Carefully twist each needle CCW 5 times completely. If you don't understand call US Speedo



5. Continue twisting and use the needle tool to lift at the same time.



6. Each of the gauge faces come off.



7. New US Speedo Daytona Edition gauge face kit.



8. Remove the Black OEM gauge face from the light pipe.



9. Each of the gauges are different. Only change one at a time.



10. The back of the US Speedo gauge face has a plastic liner. Remove.



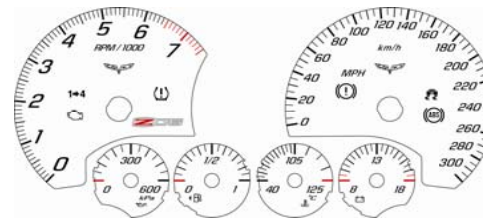
11. As you complete the change, place them into position.



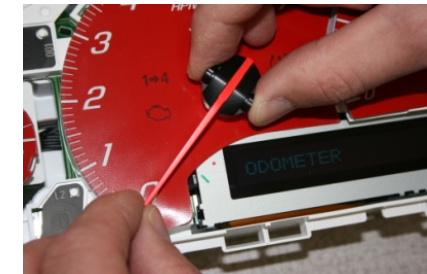
12. The speed and tach, it is best to place the light pipe into position and then the gauge face.

TAKE CLUSTER BACK TO CAR AND
PLUG IN. LEAVE THE KEY IN THE OFF
POSITION.

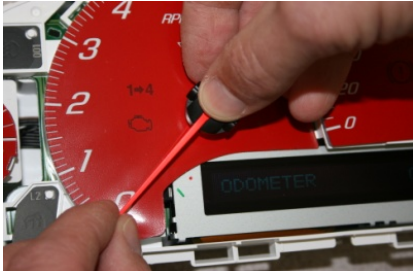
13. Take the cluster back to the car and plug in. Do not start.



Refer to the diagram on where to set the needles.



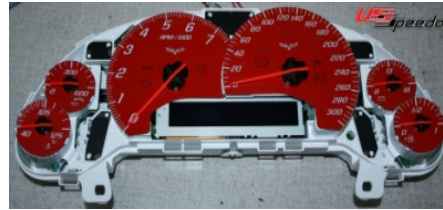
15. Hold both ends of the needle. DO NOT press down completely yet.



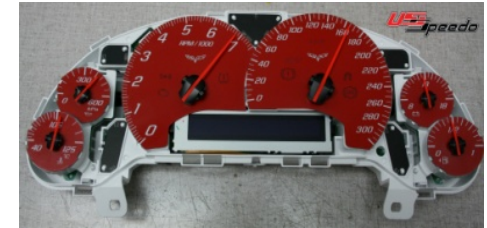
16. Press down with your thumb on the center of the hub. ONLY 1/2 down for now.



17. Notice for the small gauges, there are 2 different sizes.



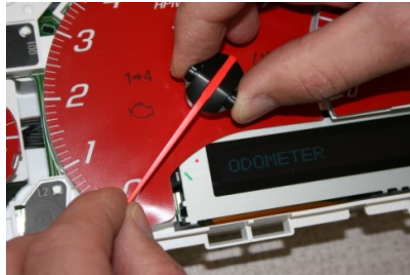
18. Now you should have all the needles in place. Unplug and put the cluster in your lap.



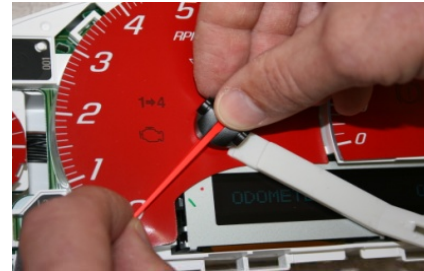
19. Move the needles so they are pointing up.



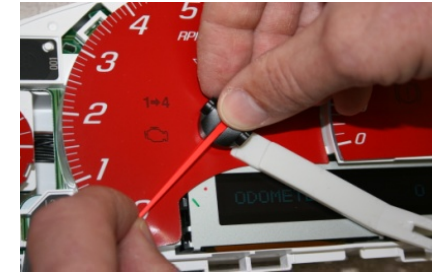
20. Plug the cluster back in, each needle should go back to the low or 0.



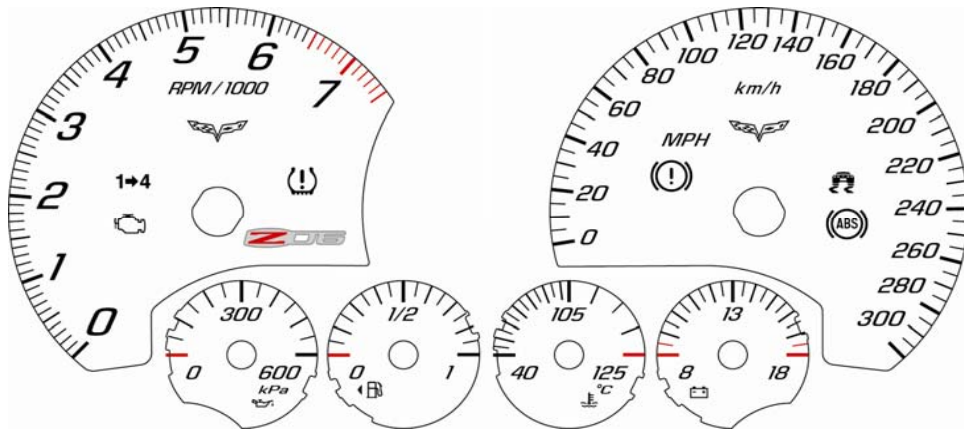
21. If a needle is set wrong, remove it. Unplug the cluster and start over.



22. Place the cluster on a flat surface and press the needles down.



23. Place the needle tool under the hub for proper height of the hub.



It is normal for the edges to have a small burn. It is caused by the laser when cutting the part. It is ALL covered with the trim from the lens.

This installation should only take about 30 minutes. If you have any questions, please contact US Speedo 810.244.0909

PLEASE NOTE: For important installation tips on this Corvette Gauge face, please call Harry at US Speedo prior to installation .
810-244-0909 8 AM to 5:00 PM EST Monday-Friday

We strive to ensure your total satisfaction with this install and want to share what we know

If you decide that you do not wish to attempt this install, you have the option to ship the removed cluster to us. The install is \$40 which includes shipping back to you. This service will take about a week with ship time.