



04-09 Pontiac Grand Prix



1. Start to remove the cluster...



2. Remove the side trim cover with a flat screw driver.



3. Remove the bottom trim screw.



4. Pull out on the knee trim. It only snaps out.



5. Reach behind the speedo trim and pull out.



6. Remove the trim around the speedo.



7. Remove the 4 screws holding the speedo in place.



8. Remove the 4 screws.



9. Unplug the speedo.



10. Take the speedo inside to complete the install.



11. Remove the clear lens by releasing the clips.



12. Mark where each needle is at. Before removing any needles.



13. Twist each needle down past the low mark.



14. Remove each needle.



15. Remove the stock gauge face.



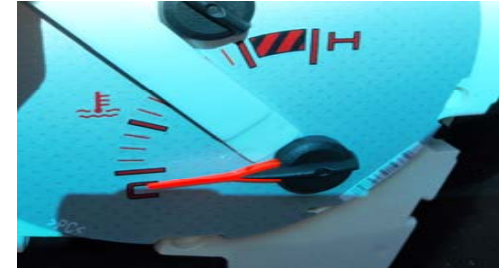
16. On the back of the US Speedo gauge face is a release liner. Remove and install gauge face.



17. Align the gauge face as shown



18. Take the speedo and needles back to the car and plug in.



19. Set each needle to the exact spot that you marked. Leave the key off.



20. Use the handle of the needle tool under each hub to check for height.

21. Unplug the cluster.



22. Move the needles up.



23. Plug the cluster in. Each needle must return back to the original mark.

IF NOT, unplug the cluster, remove the needle and start over. **DO NOT MOVE** the needle with the cluster plugged in.



Snap lens back into place and install.