



F250 05-07



1. Pull on the dash to remove. It is held in place with clips.



2. Pull out straight towards you.



3. Reach behind the dash and unplug the switches.



4. Unplug the switches on the left side.



5. Reach behind and unplug the switches.



6. Pull the dash over the steering wheel and toward you. You don't need to remove all the switches.



7. Remove the 4 -7mm screws hold the cluster in place.



8. Remove the shift indicator. Push in on the tabs and slide down.



9. Turn the key on then off. Mark each of the needle positions on a piece of paper.



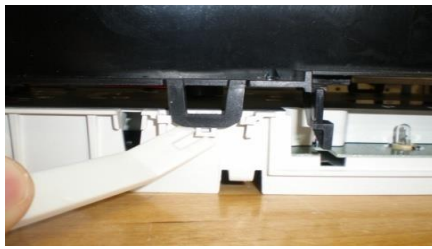
10. Leave the key off to mark all of the needle positions.



11. Leave the key off and unplug the cluster.



12. Take the cluster inside to start the gauge face install.



13. Remove the clear lens.



14. Twist each needle down past the low mark.

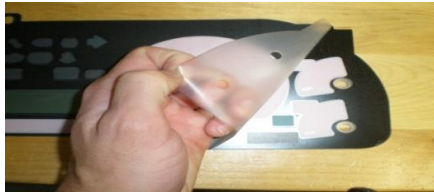


15. Remove each needle.





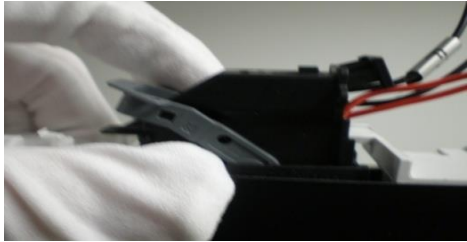
16. Remove the factory gauge face. It has glue on the back side.



17. On the back of the US Speedo gauge face is a plastic liner, remove



18. For Stainless Gauges, use the cotton gloves. Do not touch the face.



20. Plug the cluster in. Turn key on the OFF.



21. Start to set the needles. Do not push down completely yet.



22. Unplug the cluster. Twist each needle 1/2 way up. Plug in.



19. Take the cluster and needles back to the truck.

23. Each needle must go back to the original position. IF not, remove and start over at #20.



24. When needles are correct. Unplug and take inside.



25. Place the handle of the needle tool under the hub and push down.



26. Push each hub down till it makes contact with the tool. 2nd notch.



27. Take the cluster back to the truck and plug in. Make sure each each is correct and install.