



**09-13 Dodge Ram**



1. Take a picture of each needle with the key off. You will need this when you install the gauge face.



2. There are 3 hex heads screws to remove.



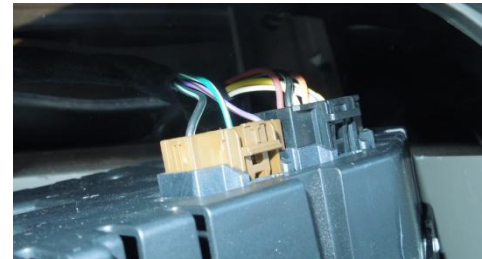
3. Remove the trim. The bottom of the trim part is hold in with snaps



4. Remove the trim.



5. Remove the screws holding the cluster in place. 7mm screws



6. Push in on the top of the plugs to release the wire connectors.



7. Make sure the key is off when removal of the cluster. Take a picture of each needle location with the key off.



8. Use a tool to remove the top lens from the speedometer.



9. This is a little tricky, there are many of these to release.



10. With the lens off, twist the needles down past the low stops.



11. Twist and pull at the same time. Grab the hub with your fingers and lift up.



12. Remove each needle with the same technique.



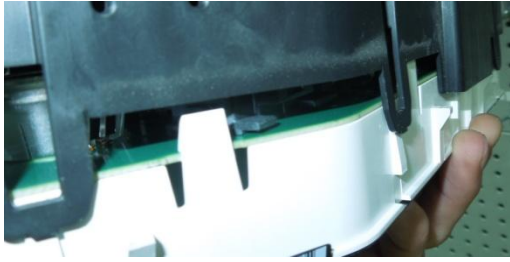
13. The trip button. Lift up, you may need a pry tool to pull out of the hole.



14. After the trip is out, switch to the back side to remove the back plastic.



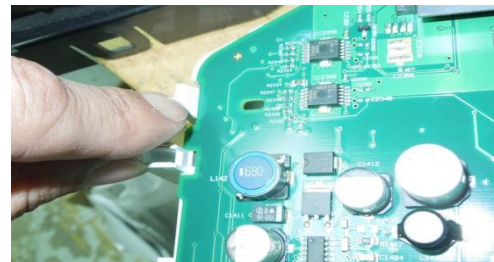
15. Use a tool to release the tabs and remove the back side.



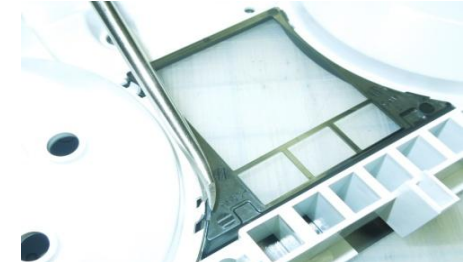
16. Remove the back plastic.



17. Press on the tabs around the outside to remove the board from the plastic.



18. Do not break the tabs, they are needed to secure the board in place.



19. Back side center trim. It is held in with clips. Press in to release the clips.



20. Remove the trim part.



21. Remove the Gauge face and replace with the new US Speedo Gauge Face.

These are one of the more difficult gauge face installs.

If you have questions or need help, contact US Speedo Tech Support.

Professional installation is available for \$49 + shipping. Send to US Speedo

Installing the gauge face and needles

1. Put the new gauge face in place.
2. There may be glue tabs on the back side of the gauge face, remove the liner and install
3. Put the top retainer trim back into place from step 20
4. Reassemble with cluster, circuit board, back plastic.
5. Take the cluster back to the truck and plug the cluster in to reset the motors.
6. Turn the key on, then off. Set the needles to match the pic you started with.
7. Unplug the cluster. Plug the cluster back in. The cluster should reset.
8. Make sure the needles are still in the correct location.
9. Check the height of each needle hub. Make sure it is NOT touching the gauge face.
10. Put the lens on and install the speedometer.

