



04-11 Ford Ranger



1. With the Key off, mark the location of each needle on the diagram. Or take a picture



2. Pull the trim back and remove the metal panel.



3. Remove all the screws in the Metal Panel and remove.



4. Remove the screws holding the top trim panel in.



5. Remove the screws above the speedometer



6. Remove all the screws above the speedometer



7. Remove the screws under the radio.



8. Pull Radio panel out.



9. Remove the trim panel around the speedometer.



10. Remove the 4 screws holding the speedometer in place.



11. Remove the shift indicator. CAREFUL. There are 2 snaps / tabs that hold it in place.



12. Make sure the key is off. Unplug the cluster. 2 plugs.



13. Take the cluster into a clean environment to install the gauge face.



14 Twist each needle down past the low and stop point.



15. Use the needle tool to remove the needles. These are tight. Lift upwards.



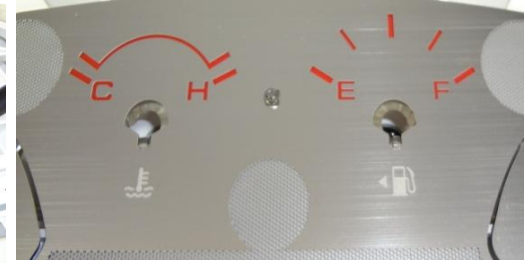
16. Remove each needle. Remove the gauge faces. Notice the little tabs that hold each piece into position.



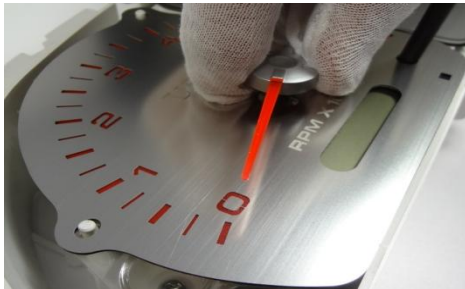
17. Remove each oem gauge face. **And put on the cotton gloves**



18. Place the new US Speedo Gauge face into position.



19. Place each part under the little tabs.



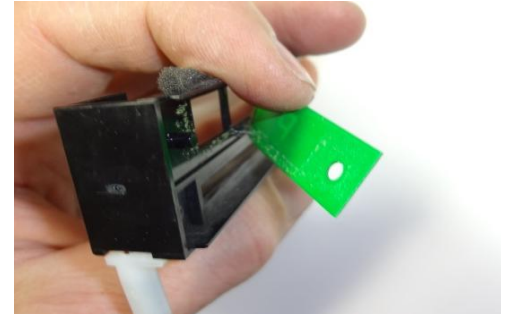
20. Take the cluster back to the truck. Plug in the cluster. Set each needle in the spot from your pic or diagram.



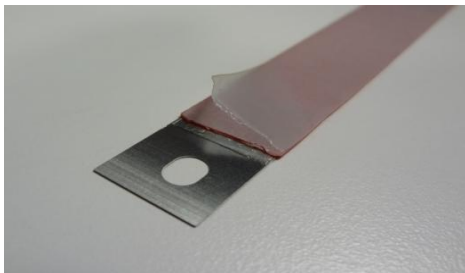
21. Remove the cluster and use the handle of the tool as a height gauge tool. Lowest setting on the handle.



22. Shift indicator. Do not remove from the truck.



23. Remove the black shift face.



24. On the back side of the new part, remove the liner and put into position



Correctly installed



Correct needle placement with the key off.

