



05-08 Tacoma



1. Take a picture or mark on the diagram each needle location. KEY OFF



2. Take the cluster into a clean area to begin the install.



3. Press the tabs from the back side to release the clear top lens.



4. Remove the lens and clean if required.



5. With the lens off, twist each needle past the low marks.



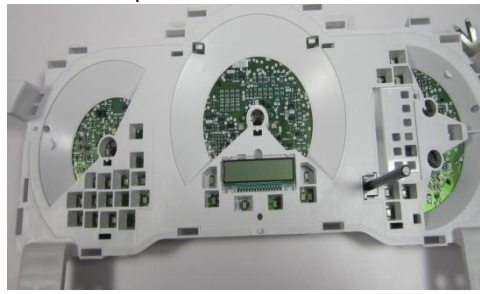
6. Twisting the needles down will help with the removal.



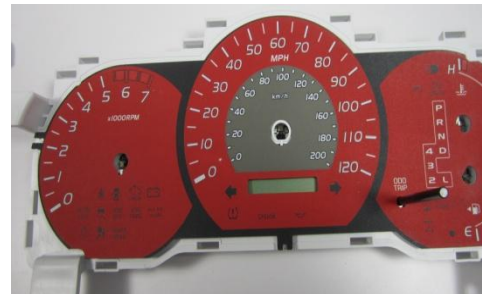
7. Use the needle tool to remove the needles.



8. Remove each needle. Remove the gauge face CAREFULLY. There are small tabs holding the gauge face



9. Remove the gauge face.



10. Put the new US Speedo gauge face in place. If you are installing a stainless USE gloves.



11. Place the gauge face under the tabs.



12. Take the cluster back to truck and plug in. Leave the key off and set each needle



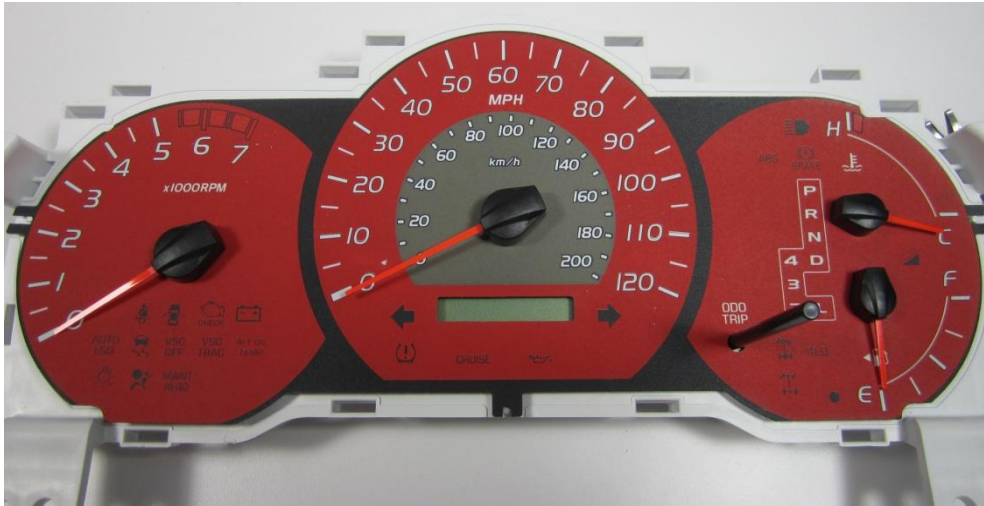
13. Set to the exact same position as before.



14. Not shown. Use the handle side of the needle tool as a height gauge under the needle hub.



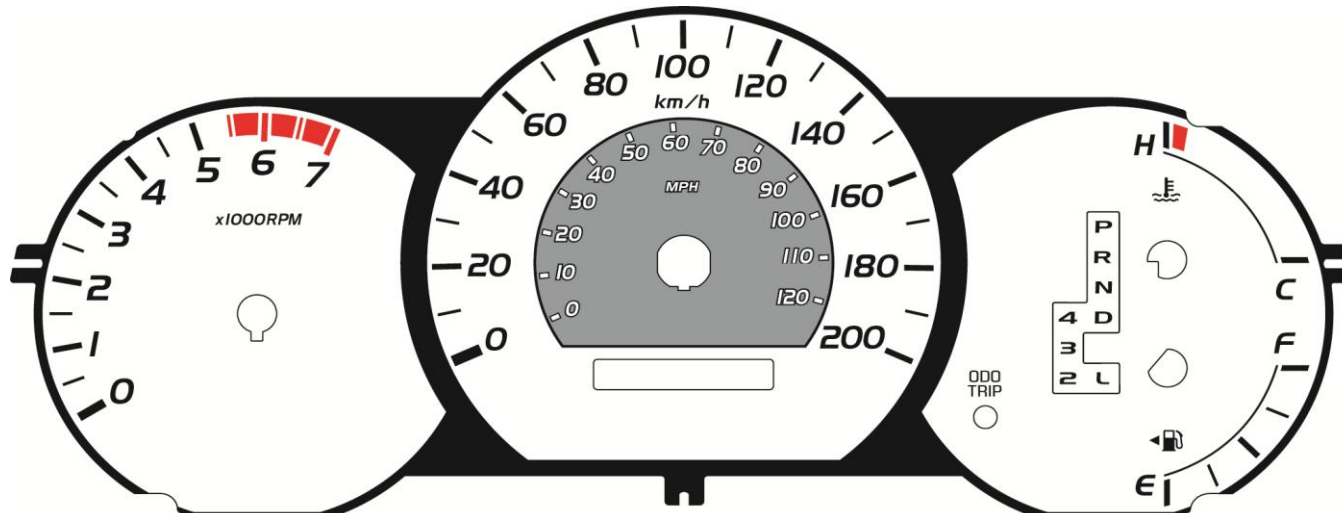
15. Test the cluster before putting the lens back on.



Different LED are available



Rechargeable LED Lights



Use this diagram to mark each needle position. Mark with the key turned off.