



05-08 Tacoma



1. Mark the needle position with the key off.



2. Phillips screw. It is plastic. You can not put any pressure on it to remove.



3. The screw is held in with this plastic clip. Remove.



4. Pull straight out on the lower trim. There are some screws at the bottom to remove if you need to.



5. Pull out on the trim. It is held in with clips.



6. Continue pulling all around the trim.



7. Make sure the lower trim is pulled out before the top trim.



8. All this trim is held in with only clips.



9. Unplug the switches.



10. You can push the switches thru the front to unplug if needed.



11. Slide the trim part to the left to remove.



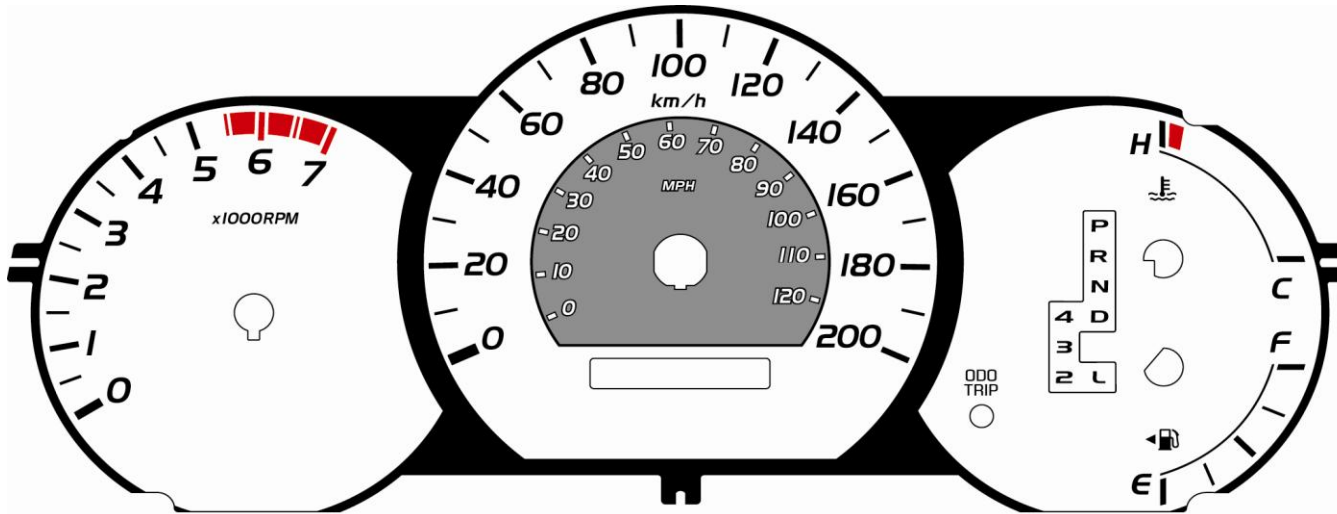
12. Remove the screws on each side of the cluster.



13. Remove the screws.



14. The lower switches can be pulled out if necessary when you install.



Use this diagram to mark each needle position. Mark with the key turned off.