

Impala/Monte Carlo L.E.D Install Guide

Tools Needed

- Included needle removal tool
- flat blade screwdriver or upholstery clip tool
- clip tool
- pencil tip soldering iron, solder
- small wire/side cutters



Remove the speedometer from the vehicle



using the screwdriver or clip tool release the clips holding the lens cover on.

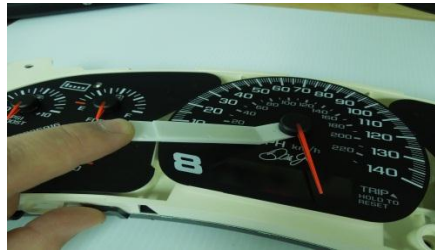
cycle the key from off, on, off. Mark the location of the needles on the diagram.



Remove the lense and turn the pointers down past their low point.



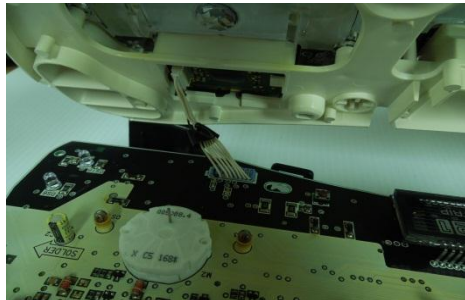
you will feel at stop at the low mark, continue turning to break it free.



Use the needle tool to pry up on the pointers to remove them.



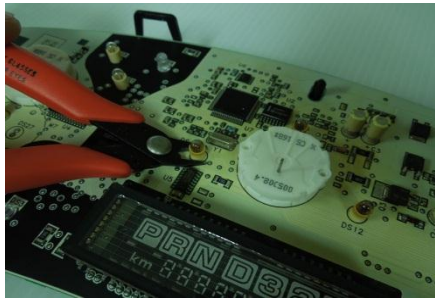
release the clips holding the black back cover and remove the cover.



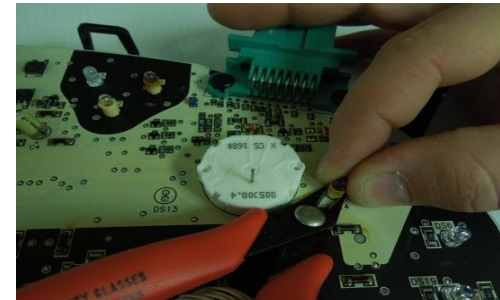
lift the circuit board from the case, unplug the wires from the back of the messagecenter



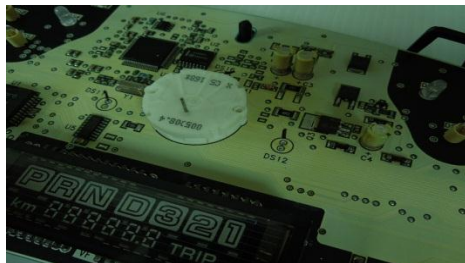
use the diagram on the back of the page to locate the illumination bulbs.



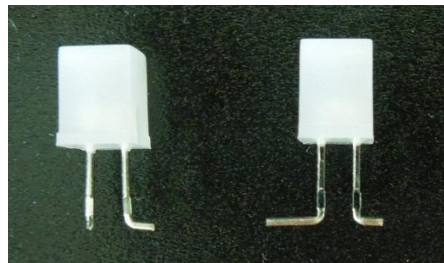
using the side cutters carefully cut the bulb from the board



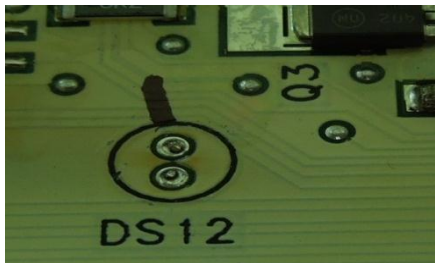
holding the bulb while cutting will help prevent it from breaking or flying away



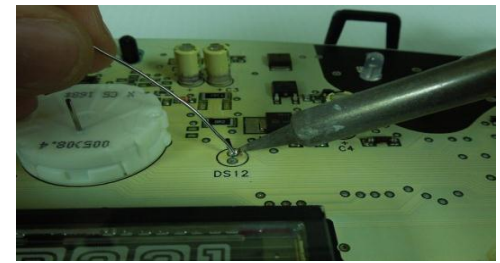
use the included diagram to mark the proper side of each bulb location



The Leds will look like one of the above

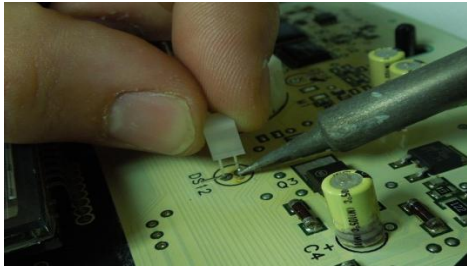


The single bent leg or the short bent leg goes toward the marked side.



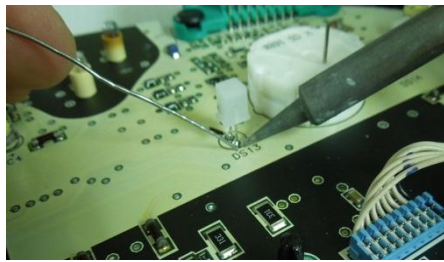
Melt a ball of solder on each of the marked side solder pads.

Impala/Monte Carlo L.E.D Install Guide

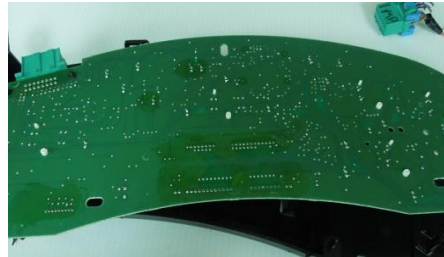


Melt the solder on the marked side of one location and place the short bent leg into the puddle

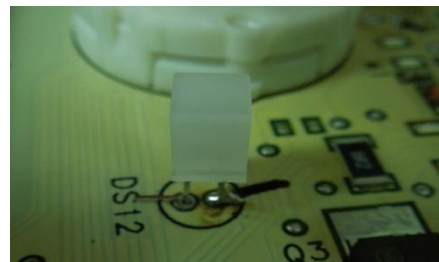
If you have any leds not working,
1, verify the orientation of the led to the mark on the diagram.
2, add solder to both sides of the led making sure you have good connection to board.
3, remove the led and rotate it 180 degrees and resolder it.
4, call UsSpeedo at (810) 244 0909 for tech assistance.



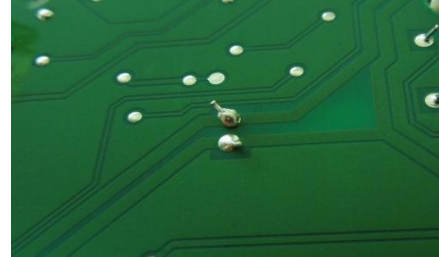
solder the other leg (will be either cut or bent long) to the pad oppsite the marked side.



turn the board over and locate the spots were you have soldered leds on.



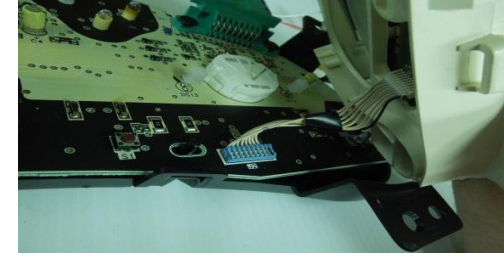
Continue placing and soldering the leds until you have one in every location.



Inspect the spots making sure the two puddles are not touching, If they are use the soldering iron to clean it up.



plug the board back into the car and turn on the light to verify that they all work.



place the board into the back cover and replace the front case being sure to plug in the message center.

plug the cluster into the car, key off. You will hear the motors reset.



with the key off place each needle back on pointing where you marked it.

Replace the lens back on the cluster and reinstall in the vehicle.



unplug and plug in the cluster, the needles will cycle, check your sets, remove and reset any that are incorrect.



use the tail of the needle tool to gauge your needle height. You want it to be just touching the small step on the rear of the tool.



Impala/Monte Carlo L.E.D Install Guide