



2003-2006 GM fullsize "left side set" led install instructions



- Tools Required**
- Black marker
 - small philips screwdriver
 - small flat screwdriver
 - upolstery clip tool or flat screwdriver
 - small side cutters
 - tweezers
 - solder
 - pencil tip soldering iron

Kit contents.



The kit includes a single led for the headlight switch, two leds with bent legs for the 4x4 control, and two leds with straight legs for the cargo lamp or rear wiper switches depending on the vehicle one or both of the leds will be used.

//////////START//////////

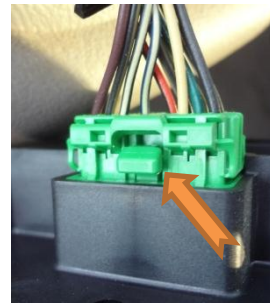
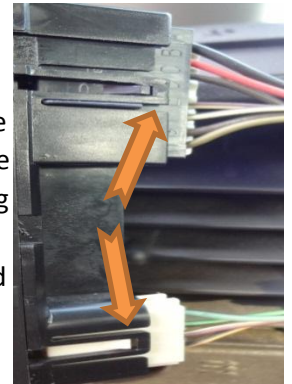
Begin by removing the three units from the truck.
Turn the key on and place the vehicle in low gear.



Sharply pull on the front panel of the dash, work your way around until you can lift it up and out, it is only held on by clips and will pop free. place it on top of the dashboard.

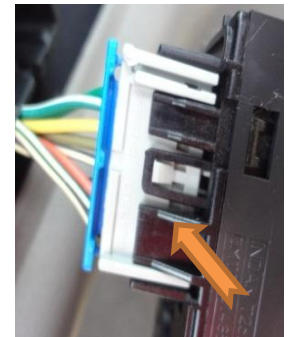
Put The Vehicle Back In Park And Turn The Ignition Off.

Remove the 4x4 switch by releasing the clip on the left side first, the release the top clip. The switch will now slide out. Unplug the switch by lifting up on the clip in the photo to the right and pulling on the plug.



Remove the headlight switch next by releasing the single clip on the top and the two clips on the bottom of the switch. slide the switch out and depress the tab pointed out in the picture to the left to unplug it.

Remove the cargo / foglamp / rear wiper switch by releasing the clip on the top and on the bottom. Slide the switch out and release the clip holding the plug in.



Continue on page 2



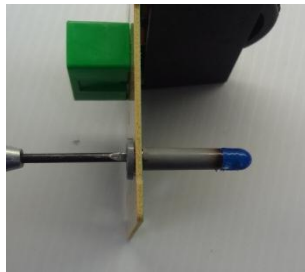
Prepare a clean, organized, well lit workspace.

Headlight switch led Install



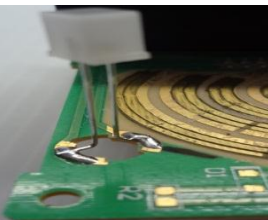
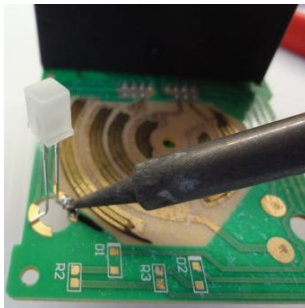
remove the four screws on the back side of the headlight switch. Lift the back cover off, and slide the circuit board up and out of the case.

The bulb you will be replacing is the blue bulb with the grey base. Turn it counter clockwise and remove it. place the board plug side down.



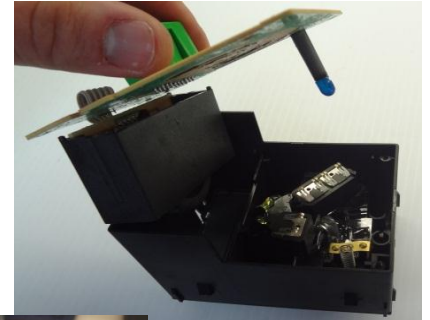
Mark the copper pad that the arrow is pointing to in the picture to the right. This is the pad that the short bent leg will be soldered to.

Melt a puddle of solder on the marked pad. Place the short bent leg of the led into the puddle. Be sure to align the other leg centered in the other pad before letting the solder cool.



Solder the long leg to its pad. Be sure that the two legs are not touching and that the led is straight up and down and side to side. Bend the legs if necessary.

place the board back onto the case. Be sure not to bend the led, and that the board is seated on the stem of the knob and the pushbutton spring.



replace the back cover and the four screws. Take the switch back to the vehicle and test its operation.

4x4 Switch

Use the small flat screwdriver to release the six clips around the switch. Start in a corner and work your way around the switch holding it open as you move.

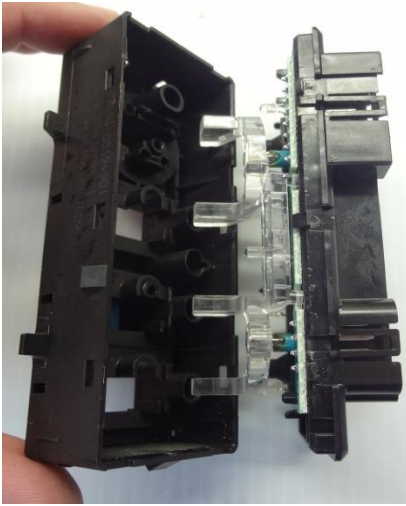


Continue on page 3



4x4 switch continued

Cargo lamp

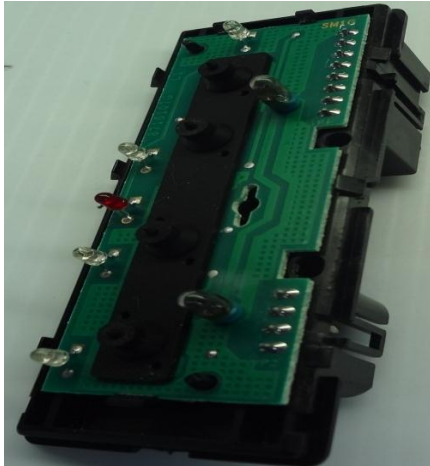


Remove the back of the switch from the front. The circuitboard is permanently attached to the back plastic cover. Remove the clear light pipe.

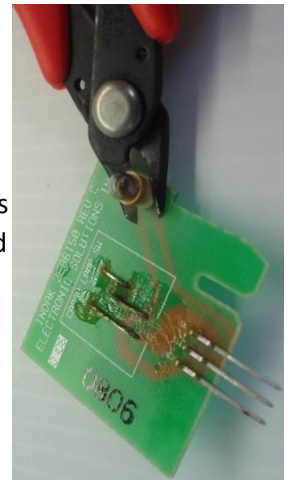


remove the back cover of the switch from the case. The circuit board is not attached to the back. Lift jus the board out of the case leaving the internals inside the case. Be sure to leave the switch face down to prevent pieces from falling out.

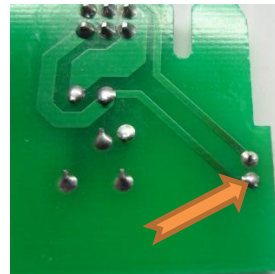
Use small side cutters to cut off only the blue lightbulbs as close to the board as possible. Wear safetyglasses and do this over a trash can to catch broken glass.



using the side cutters cut off the light bulb as close to the board as possible. Wear safety glasses and do this over a trash can to catch any broken glass.



Mark the two pads shown in the picture to the right (very top and bottom). Melt a puddle of solder on the two marked locations. Place the short bent leg into the puddle of solder and align the long leg with its pad before letting the solder cool. Solder the other side of the led to its pad. Be sure the legs of the led are not touching and the led is straight in all directions.

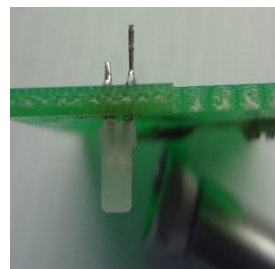


Turn the board over and find the location of the bulb you just cut off. Mark the location shown in the picture to the left.

Use the tip of the soldering iron to clean out the holes. You can start in the hole and drag away from it to get the solder and leftover wire out of the hole.



replace the clear light pipe and place the two halves back together. Press each side until it clicks into place.

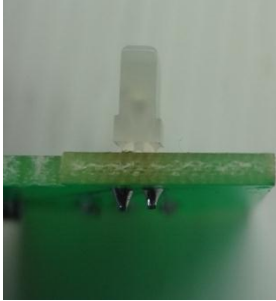


After the holes are clear you can insert the legs of the led though the holes. With the short leg on the side you marked earlier.

Continued on page 4



Cargo lamp Continued



You may need to heat the solder in the holes up while applying pressure to the led to push it though the holes.

Once the led is though solder both legs. Then use the side cutters to cut off the extra leg above your solder puddle.

slide the board back into the switch. Ensure it is seated properly

slide the front half of the switch over the back and snap the case back together.



Assembly



Return the parts back to the vehicle. Plug the headlight switch in first, then slide it into its place. Plug the cargo lamp in and slide it into its place. Plug in both plugs for the 4x4 switch and slide it into its place.

Turn the ignition on and drop the gear selector down into low gear.

Slide the dash panel down into place behind the steering wheel and align the tabs and clips on the rear side of it. Push or hit the dash with your hand near the locations of the clips to pop it back into place.

Your "left side set" install is now complete.

Troubleshooting

Need Help?

Call US Speedo Tech support (810) 244-0909